



TEMPLE



OWL CLUB

| 2023-24 MEMBERSHIP GUIDE |



OWL NATION,

I want to Thank YOU, our Temple Owl Club members, for your continued support of our incredible student-athletes. It is through your generosity that our student-athletes continue to achieve such great success in the classroom, while working to make you proud with their work in the community and in competition.

In case you missed it, here are just a few of our highlights from this year so far:

- This has been the year of Dr. Nikki Franke. Our amazing Hall of Fame coach announced her retirement at the end of the summer and has been receiving well-deserved honors and praise ever since. Over the past seven months Coach Franke has been honored with the David P. Montgomery Lifetime Achievement Award at the Wanamaker Awards Luncheon; Inducted into Philadelphia Sports Hall of Fame; Received the WeCOACH Lifetime Achievement Award, which is presented to women in sports who succeed at the highest levels in their respective careers.
- It was announced during Superbowl LVII Week that former Temple Great Joe Klecko will be inducted into the Pro Football Hall of Fame this August in Canton, Ohio. An honorable mention All-American selection for the Owls in the 1970s, Klecko recorded 78 sacks in his 12-year NFL career and was best known along with fellow Jets' defensive linemen Mark Gastineau, Marty Lyons, and Abdul Salaam as the "New York Sack Exchange." I hope you can join us in Canton for this special occasion.
- Men's Basketball upset #1 Houston on the road, 56-55, marking just the third time in the program's history, and the first in 23 years, that the Owls defeated the nation's top team.
- True freshman QB E.J. Warner became the first Temple player to be named AAC Rookie of the Year. He set the single-game passing record for yards (527) and completions (45), while

These are just a sampling of the many achievements our student-athletes and teams have been able to accomplish the first half of this academic year through your support.

In the classroom our student-athletes continue to reach new heights, earning an overall grade point average of 3.28 for the fall semester, the highest non-COVID related fall semester on record. Additionally, it was recently announced that Temple's student-athletes posted their highest NCAA Graduation Success Rate of 95 on record, which ranks ninth amongst all Football Bowl Subdivision (FBS) institutions. I hope you share in our pride for the academic accomplishments of our student-athletes, as we have established a reputation for being home to exceptional SCHOLAR-athletes.

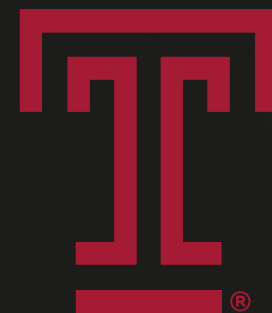
All these accomplishments have been made possible through your generosity and support. On behalf of Temple University, our athletics staff, and student-athletes I want let you know how much we appreciate YOU. I look forward to thanking you in person at an upcoming athletics event.

GO OWLS!

Arthur Johnson | Vice President/Director of Athletics

throwing for a career-high five touchdowns against East Carolina to close out the season. His 3,028 passing yards are the most by a freshman in Temple history and ranks second to P.J. Walker's 2016 total of 3,295 for most by any quarterback. Warner is in sole possession of first place on the all-time single season completions record with 278.

- Temple Field Hockey had its best start since the 1984 season and was nationally ranked for the first time since the 2013 season. The team finished the year with a 13-6 record, falling in a shootout with top-seeded Old Dominion in the BIG East Tournament.
- Temple Fencing brought home their 27th straight NIWFA Title and finished the season ranked #12 in the nation. Sophomore Constança Dimas was selected to represent her home country of Portugal at the 2023 European Championships hosted in Tallinn, Estonia. Junior Diana Tiburcio was awarded the Barry Goldwater Scholarship for the 2023-24 academic year. This prestigious honor was designed to foster and encourage outstanding students to pursue research careers in the fields of the natural sciences, engineering, and mathematics.
- Finally, the Temple women's tennis duo of Jamie Wei and Maiko Uchijima earned a fifth-place ranking in the Intercollegiate Tennis Association (ITA) doubles rankings following the fall season. The duo posted a 14-1 record during the fall campaign.



CONTENTS

- 2 **LETTER FROM THE AD**
- 3 **WHAT IS THE TEMPLE OWL CLUB?**
- 4 **WHAT IS NEW/STAFF**
- 5 **WAYS TO GIVE**
- 6 **MAJOR GIFTS**
- 7 **LEGENDS SOCIETY**
- 8 **ANNUAL GIVING**
- 9 **MEMBER BENEFITS**
- 10 **PRIORITY POINTS/KEY DATES**
- 11 **FOOTBALL PARKING**
- 12 **BASKETBALL TICKETS & PRIORITY SEATING**
- 13 **PREMIUM SEATING & PREMIUM EXPERIENCE**
- 14 **MEMBERSHIP RENEWAL FORM**
- 15 **HOW TO GIVE/COMPLIANCE**

WHAT IS THE TEMPLE OWL CLUB?

MISSION

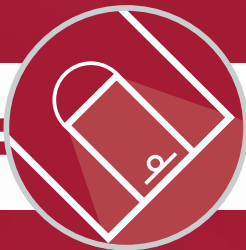


The Temple Owl Club provides the resources needed to enrich the lives of our student-athletes as they strive to achieve excellence in the classroom and at the highest level of competition by serving and connecting the Temple community with unparalleled experiences and tradition.

AS A MEMBER OF THE TEMPLE OWL CLUB, YOUR COMMITMENT HELPS TEMPLE SECURE RESOURCES FOR:



Student-athlete scholarships and financial aid



Enhanced facilities and practice spaces



Foremost recruiting programs to attract talented athletes and coaches



Innovative strength and conditioning equipment and technology and nutritional support services



Mental health and wellness programs and staff



Funding for travel to away competitions and study abroad experiences for student-athletes



Opportunities for community involvement and leadership development



WHAT IS NEW?

THE 1894 SOCIETY

The recently launched 1894 Society seeks to increase philanthropic support of Temple Athletics' mission to provide resources needed for student-athletes to succeed in the classroom and in competition. Further explanation can be found on page 6.

HEAD COACH ENDOWED POSITIONS

In conjunction with Temple University, thresholds have been set for the naming of endowed head coach positions. These endowments are pivotal to the success and longevity of programs. More information can be found on page 6.

T-CLUB

Temple Athletics is excited to relaunch the Temple T-Club. To learn about the official Varsity Club for former members of Temple Athletic programs please refer to page 8.

TEMPLE OWL CLUB BENEFITS CHART

The Temple Owl Club has released an updated member benefits chart that can be found on page 9.

MEET THE STAFF



ED STONER, EdD
Executive Senior Associate AD/
External Operations
215-204-5508
ed.stoner@temple.edu



D'MINIA STOKES
Associate AD of Development,
Operations
(215) 204-3340
dminia.stokes@temple.edu



AUSTIN MULLEN
Assistant Athletic Director
for Major Gifts
(215) 204-2286
austin.mullen@temple.edu



ROB SILK
Associate Director
of Development
(215) 204-4501
silk.robert@temple.edu



DAVE GERSON
Associate Director of
Development, Operations
(215) 204-6725
dave.gerson@temple.edu

Temple Owl Club | Aramark STAR Complex | 1816 N. 15th Street | Philadelphia, PA 19121 | OwlClub@temple.edu | (215) 204-2582

WAYS TO GIVE

WAYS TO SUPPORT:



Attend Temple Athletics Events

Show your support for the Owls by wearing your cherry & white to athletic competitions. For ticket information, please call 215-204-8499.



Refer a Friend

You can help Temple Athletics build upon our strong donor and fanbase by referring friends to join the Temple Owl Club.



Online

To process your own donation via credit card, you can go to our TU Athletics support page



Temple Owls Exchange

The Temple Owl Exchange was created to provide opportunities for Temple student-athletes to take full advantage of Name, Image and Likeness. You can support by signing up your company through the INCLR platform or by donating to the TUFF Fund Collective.

WAYS TO GIVE:

TEMPLE



OWL CLUB

Owl Club Annual Fund

Unrestricted support allows athletic department leadership to provide support for 500+ student-athletes to succeed in the classroom and in competition. These gifts include benefits identified in the membership benefits chart.



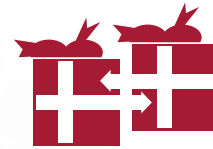
The 1894 Society

A philanthropic giving society that aligns donor support with athletic department needs. These gifts are philanthropic in nature and are above and beyond any priority seating fees.



Estate Giving

Leave a legacy by including Temple Athletics in your estate plans. This includes but is not limited to life insurance policies and estate bequests of cash, stock, and real estate.



Matching Gifts

Many companies and corporations will match philanthropic gifts to Temple Athletics.



Gifts of Securities

Donors are able to gift appreciated stocks, bonds, and mutual funds.



Gifts in Kind

Temple Athletics accepts professional services, products, or equipment that can be used by the department.





MAJOR GIFTS

THE 1894 SOCIETY TEMPLE ATHLETICS

The 1894 Society, launched in March 2023, serves as the leading philanthropic giving society for Temple Athletics. Gifts provided by members are pivotal to providing student-athletes the support needed to excel in the classroom and in competition.

Membership will include individuals who make charitable contributions of \$25,000+ annually or commit to a \$25,000 five-year pledge (\$5,000 annually) in support of Temple Athletics' mission to provide opportunities for its student-athletes to maximize their academic, athletic, and life-skill potential.

While the 1894 Society is philanthropic in nature, members will enjoy unique and specialized stewardship opportunities throughout the year, giving supporters deeper and more meaningful interaction with Temple Athletics.

HEAD COACH ENDOWMENT OPPORTUNITIES

Temple Athletics is excited to begin endowing head coaching positions. These endowments support the greatest needs for each program and help Temple Athletics provide resources needed for student-athletes to succeed in competition. Endowments help promote longevity of programs and allow donors to remain linked to a program in perpetuity.

Endowments

\$2,000,000+

Athletic Director

Football Head Coach

Men's Basketball Head Coach

Women's Basketball Head Coach

\$1,000,000+

HEAD COACH POSITION FOR ANY OF THE FOLLOWING SPORTS

Men's Crew

Men's Cross Country

Women's Cross Country

Women's Fencing

Women's Field Hockey

Women's Gymnastics

Women's Lacrosse

Women's Rowing

Men's Golf

Women's Soccer

Men's Soccer

Men's Tennis

Women's Tennis

Women's Track & Field

Women's Volleyball

Cheerleading

Diamond Gems Dance Team

OTHER WAYS TO ENDOW SUPPORT

Athletic Director Excellence Endowments

Sport-Specific Excellence Endowments

Student-Athlete Scholarship Endowments

TEMPLE ATHLETICS'

LEGENDS SOCIETY

The Temple Athletics' Legends Society recognizes alumni and friends of Temple University who have contributed \$100,000 or more in lifetime giving in support of Temple Athletics.

**Legends Society Levels**

DIAMOND LEGEND \$2,500,000	PLATINUM LEGEND \$1,000,000	EMERALD LEGEND \$750,000	GOLDEN LEGEND \$500,000	SILVER LEGEND \$250,000	CRYSTAL LEGEND \$100,000
---	--	---	--	--	---



Wearing a single-digit jersey is one of the highest honors that a Temple football student-athlete can earn. Prior to each season, these coveted numbers are awarded to the team members who embody the Temple TUFF culture in the classroom, on the field, and in the community.

Temple Athletics shows appreciation to some of the most ardent supporters of the athletic department by welcoming them to 'The 9' for their commitment and generosity at the \$50,000+ annual unrestricted level.

Temple donors will be recognized in The 9 program for their philanthropic impact on the academic and athletic experiences of our student-athletes. The 9 receive exclusive benefits for their generous support of Temple Athletics. **For more information on The 9 or questions about joining, please contact Temple Athletics Owl Club at 215-204-2582 or owlclub@temple.edu.**

1 DREW & RACHEL KATZ	2 PAT & LINDA MARION	3 MITCH & DEBRA SONKIN	4 OPEN	5 TIM & HOLLY COUGHLIN	6 SETH & DANA GOLDBLUM	7 AMY LAROVERE & JIM JOLMAN	8 OPEN	9 OPEN
---	---	---	-------------------------	---	---	--	-------------------------	-------------------------



ANNUAL GIVING

TEMPLE OWL CLUB



The Temple Owl Club provides resources needed to enrich the lives of our student-athletes as they strive to achieve excellence in the classroom and at the highest level of competition.

Support for our student-athletes not only provides a first-class competition experience, but ensures a continuum of excellence across student-athlete welfare. This includes access to top academic, training, nutrition, and professional development resources. Through support provided by the Owl Club, our

student-athletes graduate as leaders in their communities and model representatives of Temple University.

We are committed to operating with integrity in the best interest of the University, the American Athletic Conference, and the NCAA. Donors can join the Owl Club to help with these and other initiatives, with an annual gift of \$100 or more to the Owl Club Annual Fund or Sport-Specific Funds. Young alumni under the age of 30 can join the Owl Club with a donation of \$50 or more to the Owl Club Annual Fund or Sport-Specific Funds.

TEMPLE T-CLUB



Temple Athletics and the Temple Owl Club have recently relaunched the T-Club, the official varsity club for former student-athletes, managers, trainers, coaches, spirit squad, and marching band members.

The mission of the T-Club is to heighten engagement and enhance community among Temple University's athletics affiliated alumni by providing awareness and accessibility to those who remain passionate beyond their participating years. Our aim is to recognize and celebrate the rich history and tradition across the entirety of Temple Athletics.

T-CLUB MEMBERSHIPS DOUBLE AS OWL CLUB MEMBERSHIPS! *T-Club specific benefits include but are not limited to:*

- Owl Club Membership Card
(includes T-Club sticker)
- T-Club Custom Lapel Pin
- Owl Club Car Magnet
- T-Club Homecoming Tailgate
- Pre-Game Sideline Access for the Homecoming Football Game
- Pre-Game Reception for a Select Home Men's/Women's Basketball Game
- Fall and Spring Networking Events
- Access to replace or purchase letterman jacket *(if eligible)* or exclusive T-Club jacket

2023-24 TEMPLE OWL CLUB MEMBERSHIP GUIDE

ANNUAL GIVING 2023 MEMBER BENEFITS

	MEMBER	CHERRY & WHITE	CAPTAIN	CONWELL	MVP	ALL-CONFERENCE	ALL-AMERICAN	NATIONAL CHAMPIONS	HALL OF FAME
	\$100-\$249	\$250-\$499	\$500-\$999	\$1000-\$2499	\$2500-\$4,999	\$5k-\$9,999	\$10k-\$24,999	\$25k-\$49,999	\$50k-above
Helping Temple Student-Athletes Succeed in the Classroom and Competition	T	T	T	T	T	T	T	T	T
Tax Deductible Donation*	T	T	T	T	T	T	T	T	T
Member Recognition	T	T	T	T	T	T	T	T	T
Unique Communications from the Owl Club & Temple Athletics	T	T	T	T	T	T	T	T	T
Invitations to Exclusive Owl Club & Temple Athletics Events	T	T	T	T	T	T	T	T	T
Ability to purchase Cherry Lot Parking for Home Football Games	T	T	T	T	T	T	T	T	T
Postseason and Away Game Ticket Request Priority	Priority 9	Priority 8	Priority 7	Priority 6	Priority 5	Priority 4	Priority 3	Priority 2	Priority 1
Ability to purchase White Lot Parking for Home Football Games		T	T	T	T	T	T	T	T
Annual Athletics Facility Tour			T	T	T	T	T	T	T
Temple University Conwell Society Membership				T	T	T	T	T	T
Football Pregame Sideline Passes for One Game				T	T	T	T	T	T
Complimentary Admission to Pre-Game Hospitality Room at Men's Basketball (Fox-Gittis Room)					2	4	6	8	8
Access to Purchase Personalized and Reserved Parking Spot at Football (Tailgate Row)					T	T	T	T	T
Invitation to The Stellas					T	T	T	T	T
Invitation to the Temple Student-Athlete Scholars Event					T	T	T	T	T
Invitation to the Athletic Director's Suite for a Home Men's Basketball Game					T	T	T	T	T
Invitation to the Temple Owl Club Suite for a Home Football Game						T	T	T	T
Pre-Game and Halftime Courtside Club Passes							2	4	6
Complimentary Curbside Parking Pass at Home Men's Basketball Games While Available							T	T	T
Invitation to the Athletic Director's Suite for a Home Football Game							T	T	T
Football Sideline Passes for One Entire Home Game							T	T	T
Travel to One Away Game Trip with Football								T	T
Recognition in the Temple Athletics 1894 Giving Society								T	T
Travel to One Away Game Trip with Men's Basketball									T
"The 9" Membership Recognition									T

*Excludes ticket related donation benefits



PRIORITY POINTS

TEMPLE ATHLETICS' DONOR PRIORITY RANKING SYSTEM

The Temple Athletics' Donor Priority Ranking System rewards donors for their support of Temple student-athletes. The priority ranking system is used to create a fair and equitable order for postseason ticket allocation, away game ticket requests, and home venue season ticket seat selections.

The order is determined in two steps:

STEP 1 Current Temple Owl Club Giving Level*

Hall of Fame: \$50,000+

National Champions: \$25,000 – \$49,999

All-American: \$10,000 – \$24,999

All-Conference: \$5,000 – \$9,999

1894 Society Members:

If not included in an above group.

MVP: \$2,500 – \$4,999

Conwell: \$1,000 – \$2,499

Captain: \$500 – \$999

Cherry & White: \$250 – \$499

Member: \$100 – \$249

Within these levels, donors will be segmented by a priority points system that encompasses lifetime giving to any Temple Athletics fund and other Temple Athletics related involvement. Below is the calculation for priority points;

STEP 2 Lifetime Giving to Temple Athletics** (1 point for every \$100 donation)

+ Temple Alumni (10 points)

+ Former TU Student-Athlete (10 points)

* Temple Owl Club Giving levels are based on unrestricted giving to Temple Athletics. Unrestricted funds include Temple Owl Club, Temple T-Club, Men's Basketball Priority Seating Fund, and gifts to unrestricted endowment funds.

** Lifetime Giving to Temple Athletics includes cumulative unrestricted and restricted giving. These funds include gifts to the Temple Owl Club, Temple T-Club, Men's Basketball Priority Seating Fund, Sports Excellence Funds, Capital Project Funds, Athletics Endowment Funds, and any other Temple Athletics fund.

KEY DATES

JUNE 30TH: OWL CLUB RENEWAL DEADLINE

DECEMBER 31ST: END OF YEAR GIVING

PARKING

TEMPLE FOOTBALL

Temple Athletics offers Temple Owl Club Members exclusive premium parking options at Lincoln Financial Field. As a benefit of membership, Owl Club members have the ability to purchase season parking passes in the Owl Club premium lots. Offerings include the White Lot, Cherry Lot, RV Passes, and Tailgate Row. Access to purchase premium parking begins with a minimum gift of \$100 to the Owl Club and \$50+ for Young Alumni.

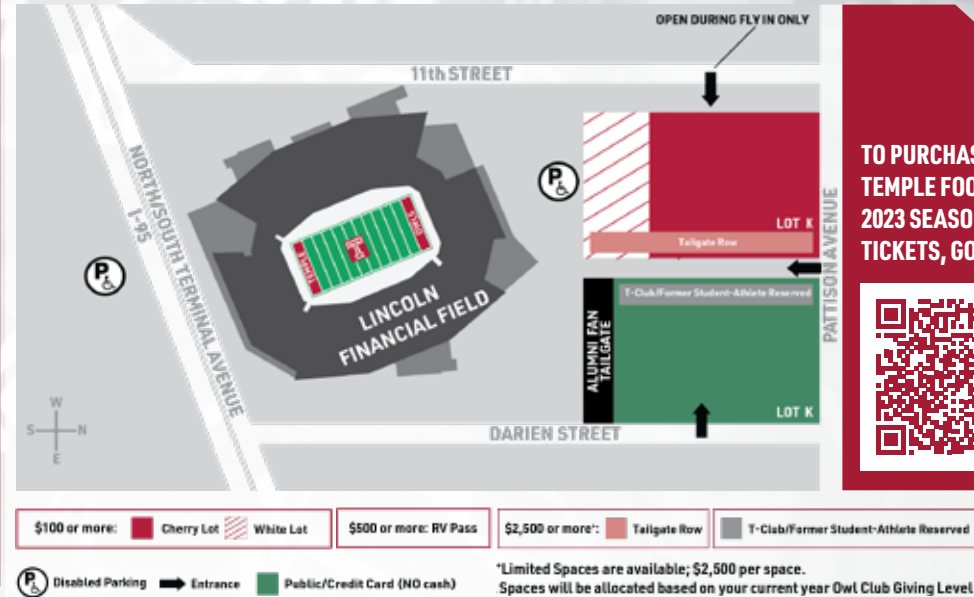
\$100 minimum donation = (1) Cherry Parking Space

\$250 minimum donation = (1) White Parking Space or (1) Cherry Parking Space

\$500 minimum donation = (1) RV Parking Pass or (1) White Parking Space or (1) Cherry Parking Space

\$2,500 minimum donation = (1) Tailgate Row Parking Space

2023 TEMPLE FOOTBALL PARKING MAP



	MEMBER	CHERRY & WHITE	CAPTAIN	CONWELL	MVP	ALL-CONFERENCE	ALL-AMERICAN	NATIONAL CHAMPIONS	HALL OF FAME
	\$100-\$249	\$250-\$499	\$500-\$999	\$1000-\$2499	\$2500-\$4,999	\$5k-\$9,999	\$10k-\$24,999	\$25k-\$49,999	\$50k-above
CHERRY LOT	1	1	Up to 2	Up to 2	Up to 3	Up to 3	Up to 4	Up to 4	Up to 4
WHITE LOT		1	1	1	1	1	Up to 3	Up to 3	Up to 3
RV			1	1	1	1	1	1	1
TAILGATE ROW					1	Up to 2	Up to 3	Up to 3	Up to 3

2023-24 MEN'S BASKETBALL SEASON PARKING

As a Temple Owl Club Member, you will receive priority access to purchase a basketball season parking pass in the Liacouras Garage located directly behind the Liacouras Center. All parking passes are purchased through ParkMobile, a third party vendor utilized by the Liacouras Center for game day parking. To be eligible, you must be a current Temple Owl Club Member at the minimum \$100 level or higher.

VIP Parking: Temple Owl Club Members at the \$10,000 level or higher are eligible for complimentary VIP parking on the 15th street entrance of the Liacouras Center. VIP parking passes are limited and available upon request on a first come, first serve basis. If you are interested, please contact the Temple Owl Club at 215.204.2582 or owlclub@temple.edu.



MEN'S BASKETBALL

TICKETS & PRIORITY SEATING

2023-2024 Men's Basketball TICKETS

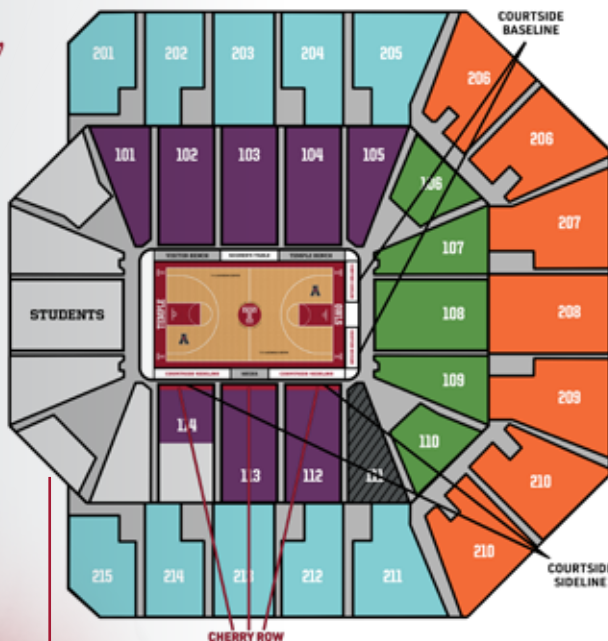
To purchase tickets
Call 215-204-TIXX (8499)
or email TixSales@Temple.edu

PRICE PER SEAT
\$638
\$421
\$293
\$166
\$99

Youth for All Lower Level: \$150
Youth for All Upper Level: \$99

*Some locations require an additional Owl Club
prior to seating elevation. Please visit
TempleOwlClub.com for more information.

For more information about Courtside and Cherry Row
premium seating options, please contact the Ticket Sales Team
at 215-204-TIXX (8499) or TixSales@Temple.edu



SINGLE GAME PARKING IN LIACOURAS GARAGE
VIA PARK MOBILE

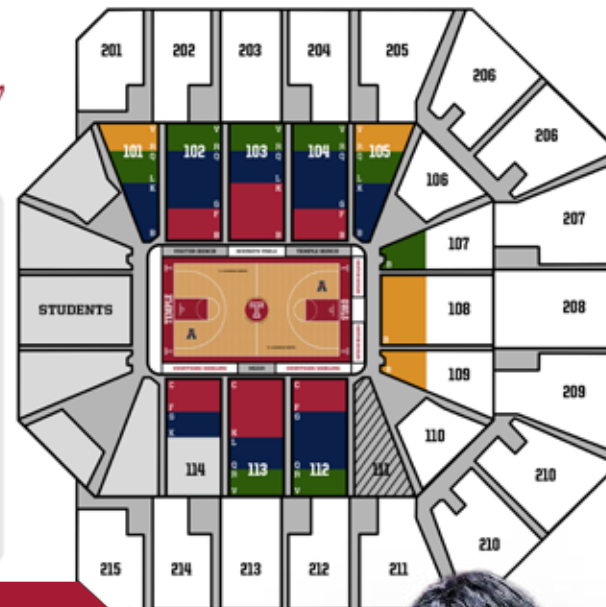
2023-2024 Men's Basketball SEATING

To purchase tickets
Call 215-204-TIXX (8499)
or email TixSales@Temple.edu

ANNUAL PRIORITY SEATING FEE (PER SEAT)
\$500
\$300
\$200
\$100
N/A

*Priority Seating Fees for Courtside seats
vary by location.

To purchase Courtside
seats, contact the Owl Club
at 215-204-3340



TO PURCHASE MEN'S
OR WOMEN'S 2023-24
BASKETBALL SEASON
TICKETS, GO TO:



	MEMBER	CHERRY & WHITE	CAPTAIN	CONWELL	MVP	ALL-CONFERENCE	ALL-AMERICAN	NATIONAL CHAMPIONS	HALL OF FAME
ABILITY TO PURCHASE:	\$100-\$249	\$250-\$499	\$500-\$999	\$1000-\$2499	\$2500-\$4,999	\$5k-\$9,999	\$10k-\$24,999	\$25k-\$49,999	\$50k-above
MBB 200-LEVEL TICKETS	Up to 2	Up to 4	Up to 4	Up to 8	Up to 10	Unlimited	Unlimited	Unlimited	Unlimited
MBB 117-119 & 107-109	Up to 2	Up to 2	Up to 4	Up to 8	Up to 10	Unlimited	Unlimited	Unlimited	Unlimited
MBB 101, 105, 111, 115		Up to 2	Up to 4	Up to 8	Up to 10	Unlimited	Unlimited	Unlimited	Unlimited
MBB 102, 104, 112, 114 ROWS G-V		1	Up to 2	Up to 4	Up to 6	Up to 8	Up to 8	Up to 10	Up to 10
MBB 102, 104, 112, 114 ROWS C-F			1	2 to 4	Up to 6	Up to 8	Up to 8	Up to 10	Up to 10
MBB 103 OR 113, ROWS L-V			1	2 to 4	Up to 6	Up to 8	Up to 8	Up to 10	Up to 10
MBB 103 OR 113, ROWS B-K			1	2 to 4	Up to 6	Up to 8	Up to 8	Up to 10	Up to 10
COURTSIDE TICKETS					1	2	4+	Up to 8	Up to 8

MEN'S & WOMEN'S BASKETBALL

PREMIUM SEATING

PREMIUM EXPERIENCE

MBB PREMIUM SEATING

Courtside Seats

For Men's Basketball Courtside Seat pricing, please contact the Temple Owl Club at 215.204.2582 or owlclub@temple.edu



Premium Basketball Loge Box:

The Loge Box offers an unobscured view of the court including 20 tickets, and provides a private area to enjoy the game. Loge Boxes are available on a single game basis with pricing varied upon the opponent. Subject to availability.

Amenities include:

- Plush Seating
- High top tables
- In-seat food and beverage service for purchase
- Access to the box an hour before the game

Premium Courtside Box:

The Courtside Box offers a unique, one-of-a-kind elevated courtside view. You'll feel part of the action as these seats sit just feet from the court. The box sits atop an elevated stage and includes 20 tickets. The Courtside Box is available on a single game basis with pricing varied upon the opponent. Subject to availability.

Amenities include:

- Plush Seating
- High top tables
- In-box catering available for purchase
- Access to the box an hour before the game

MBB HOSPITALITY

Fox-Gittis:

Temple Owl Club Members at the \$2500 level or higher are eligible for access into the Fox-Gittis pre-game hospitality room. The Fox-Gittis room includes complimentary food and beverage and opens 60 mins prior to each Men's Basketball home game and closes at tip-off. The Owl Club Members' number of guests are based on their current Owl Club Membership level (ex: \$2500-\$4,999 level members are allowed 2 additional guests, \$5k-\$9,999 level members are allowed 4 additional guests, etc.).

Courtside Club:

Courtside Season Ticket Holders and Owl Club Members at the \$10,000 level or higher are eligible for access into the Courtside Club premium hospitality room. The Courtside Club includes complimentary food and beverages with additional refreshments brought out before halftime. The doors for Courtside Club opens 60 mins prior to each Men's Basketball home game and remains open through the end of halftime. The Owl Club Member's number of guests are based on their current Owl Club Membership level (ex: \$10k-\$24,999 level members are allowed 2 additional guests, \$25k-\$49,999 level members are allowed 4 additional guests, etc.).



2023 OWL CLUB MEMBERSHIP RENEWAL

Name _____

Class Year _____ Sport Affiliation (T-Club) _____

Address

City, State, Zip _____

Email _____ Phone _____

2023 Membership Amount _____ ☐ Matching Gift

Payment Information

☐ Full Payment

☐ Monthly Installments

☐ Pledge only (*pay in full by specific date*)

☐ Check (*make payable to Temple Owl Club*)

Check Number _____

☐ Credit Card

Card Number _____

Exp. Date _____ Security Code _____

Signature _____ Date _____

Membership Levels

Hall of Fame | \$50k-above

National Champions | \$25k-\$49,999

All-American | \$10k-\$24,999

All-Conference | \$5k-\$9,999

MVP | \$2500-\$4,999

Conwell | \$1000-\$2499

Captain | \$500-\$999

Cherry & White | \$250-\$499

Member | \$100-\$249

Graduate | \$50

Mailing Information

Please mail form and payment to:

Temple Owl Club
Aramark STAR Complex
3rd Floor 1816 N. 15th Street
Philadelphia, PA 19121

Scan QR Code for online renewal form



owlclub@temple.edu | 215-204-2582
templeowlclub.com | @TempleOwlClub

NCAA COMPLIANCE

Each institution shall comply with all applicable rules and regulations of the Association (NCAA) in the conduct of its intercollegiate athletics programs. It shall monitor its programs to ensure compliance and to identify and report to the Association instances in which compliance has not been achieved. In any such instance, the institution shall cooperate fully with the Association and shall take appropriate corrective actions. Members of an institution's staff, student-athletes, and other individuals

and groups representing the institution's athletics interests shall comply with the applicable Association rules, and the member institution shall be responsible for such compliance. [NCAA Constitution 2.8.1]

HOW DO YOU KNOW IF YOU ARE AN ATHLETICS REPRESENTATIVE?

You are considered a representative of athletics interest (i.e., Booster) if you are or have ever been a member of any group that supports or promotes the athletics program (e.g., Owl Club), or if you have helped in any way to recruit student-athletes. According to the NCAA, once an individual is identified as a representative of athletics interest, the individual retains that status for life. There are rules that

govern your contact with prospective student-athletes (PSAs) and current student-athletes. Your actions can affect the eligibility of individual student-athletes or teams to compete in NCAA and conference competition.

WHO IS CONSIDERED A PROSPECTIVE STUDENT-ATHLETE (PSA) OR PROSPECT?

A prospective student-athlete is any individual who has started taking classes for the ninth grade (seventh grade for Men's Basketball).

**Making contact with a PSA is in direct violation of NCAA recruiting rules and would jeopardize the eligibility of the prospect, to attend Temple University.*

WHAT IS AN EXTRA BENEFIT?

An extra benefit is any benefit that is not expressly authorized by the NCAA

or not generally available to Temple students and/or their family members.

Extra benefits include, but are not limited to, the provision of any free or reduced meals, transportation, housing, clothing, services, entertainment, cash (or payment of any kind), or other benefits not available to all students who are not student athletes.

**This means under no circumstances may you provide a PSA, recruit, or enrolled student-athlete with any item of value - no matter how small the item may seem. Gifts of any kind are prohibited.*

Any of the above actions constitute a violation of NCAA regulations. Such actions jeopardize the eligibility of prospective or enrolled student-athletes and compromise the integrity of the athletic department.

NAME, IMAGE, & LIKENESS (NIL)

Intercollegiate-athletics is an ever-evolving landscape. In 2021, student-athletes could begin monetizing their name, image, and likeness (NIL) and earn compensation for appearances, camps, endorsements, promotional activities, etc.

Temple Athletics worked to be on the forefront of educating our student-athletes on ways they can maximize their personal brands through the Built on Broad initiative.

Ways for you to be involved in the NIL space:

The Temple Owl Exchange provides approved businesses with a platform to connect, engage, and propose NIL opportunities to Temple student-athletes.

The TUFF Fund is a third-party collective that supports Temple Athletics. The TUFF Fund works by combining resources to provide NIL opportunities to our student-athletes.

The TUFF Fund's leadership shares our commitment to the Temple student-athlete experience.

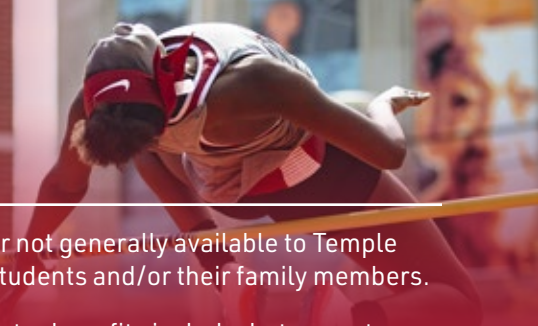
WITH NAME/IMAGE/LIKENESS (NIL) ACTIVITIES NOW PERMITTED, DO EXTRA BENEFITS STILL APPLY?

Yes. For NIL compensation to be permissible, it must be in exchange for work performed or services rendered. Our student-athletes receive education on what constitutes an NIL activity and what requirements they must meet to participate in NIL activities. Student-athletes are

required under the Pennsylvania state law to disclose all NIL activities and agreements with Temple University. Those disclosures are required to demonstrate a quid-pro-quo arrangement for the compensation.

NIL compensation that does not meet the standards listed above, would be considered an extra benefit

Please help us protect the eligibility of our student-athletes by asking questions before you act. Reach out to compliance@temple.edu with any questions or concerns.



Temple Owl Club

Aramark STAR Complex
1816 N. 15th Street
Philadelphia, PA 19121

TEMPLE



OWL CLUB

OwlClub@temple.edu | (215) 204-2582